



InHome™ Wireless Motion Sensor

Instructions

for a

Control4 / Composer Version 1.3.1

Manual Driver Installation

Card Access InHome™ Wireless Motion Sensor

Instructions for Performing a Manual Installation on Control4 1.3.1 Versions

Introduction

The Card Access InHome™ Wireless Motion Sensor is designed to work “out-of-the-box” with Control4® Software version 1.3.2 which is scheduled for release later this year.

The following instructions enable you to use the Card Access InHome™ Wireless Motion Sensor with currently-released Control4 software version 1.3.1 only.

!!! WARNING !!!: Do NOT use this driver with any beta releases of Control4 Software version 1.3.2 or the general release of Control4 Software version 1.3.2.

Essentially, this installation consists of manually copying the needed files to the correct locations in your Windows Composer software and on the target Home Theater Controller or Media Controller. If you are familiar with the file copying process, the Expert Installation Instructions below are easy to follow and can be completed in minutes.

If you are unfamiliar with this process, you can follow the Detailed Installation Instructions and achieve a successful result.

If you have any difficulties, please contact Card Access Product Support at +1.801.748.4900, extension 15 weekdays from 8am to 5pm Mountain Time for technical assistance.

Getting Started Checklist

Please have the following information ready before you begin:

_____ Obtain the Home Theater Controller or Media Controller IP address: _____

Note: You can find this in the Composer software on your Windows PC doing the following:

- Open Composer and select the “Director on Local Network” option.
- Composer will probe the network and find your Director. The next window will show the name and its corresponding IP address. Note the address here for use later (usually in the following numerical format: ###.###.###.###). Once you have this information, close Composer.

_____ Driver Files – Download the ZIP file archive named IWMS_drivers.zip from the following location:
www.cardaccess-inc.com/support/files/IWMS_drivers.zip

Note: The URL is case sensitive.

Expert Installation Instructions

If you are not familiar with the file copying process, please skip to the next section entitled Detailed Installation Instructions.

Step One Copy the file “cardaccess_wirelesscontact.c4l” to the \Drivers folder on the target Home Theater Controller or Media Controller. **Note: you may be prompted to overwrite an existing version of this file already installed on the controller. Answer ‘Yes’ to overwrite the older version of this file.**

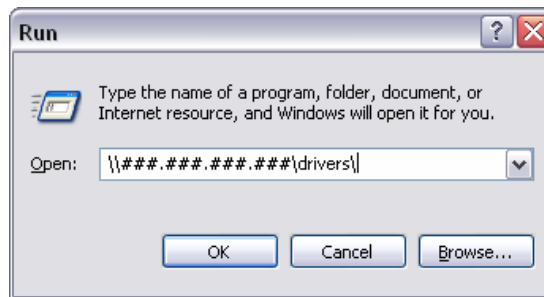
Step Two Copy the file “cardaccess_wirelesscontact.c4w” to the \Drivers folder in the Composer 1.3.1 directory. **Note: you may be prompted to overwrite an existing version of this file already installed on the controller. Answer ‘Yes’ to overwrite the older version of this file.**

- Step Three** Copy the file “*cardaccess_wirelesscontact.c4d.dll*” into the **\Control** folder, located in the **\Drivers** folder of the Composer 1.3.1 directory. **Note: you may be prompted to overwrite an existing version of this file already installed on the controller. Answer ‘Yes’ to overwrite the older version of this file.**
- Step Four** Copy the files “*cardaccess_wirelesspir.c4i*”, “*cardaccess_wirelessrelay.c4i*” and “*contactsingle_motionsensor.c4i*” into the **\Virtual** folder, located in the **\Drivers** folder of the Composer 1.3.1 directory.
- Step Five** **Reboot** the Media Controller or Home Theater Controller by removing and reconnecting power to the controller. Also, if Composer is currently running, it must be **closed**.

Detailed Instructions:

If you are not familiar with the file copying process, please use the instructions in this section.

- Step One** From your Windows PC, go to the Start menu and click on Run. In the Run box’s Open field, type:
`\\###.###.###.###\drivers\`



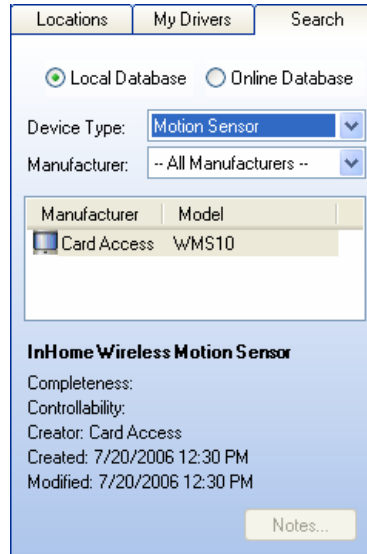
Where `###.###.###.###` is the IP address you found earlier for the Home Theater Controller or Media Controller targeted for the installation.

- Step Two** Copy the file named “*cardaccess_wirelesscontact.c4i*” to this location using the Windows Explorer. **Note: you may be prompted to overwrite an existing version of this file already installed on the controller. Answer ‘Yes’ to overwrite the older version of this file**
- Step Three** Using the Windows Explorer, find the directory where Composer 1.3.1 is installed.
The target directory is usually located at **C:\Program Files\Control4\Composer131**.
- Step Four** From inside the folder where Composer was installed, open the **\Drivers** folder and copy the file named “*cardaccess_wirelesscontact.c4w*” into it. **Note: you may be prompted to overwrite an existing version of this file already installed on the controller. Answer ‘Yes’ to overwrite the older version of this file**
The target directory is usually located at **C:\Program Files\Control4\Composer131\Drivers**
- Step Five** From inside the **\Drivers** folder, open the **\Control** folder and copy the file named “*cardaccess_wirelesscontact.c4d.dll*” into this location. **Note: you may be prompted to overwrite an existing version of this file already installed on the controller. Answer ‘Yes’ to overwrite the older version of this file**
The target directory is usually located at **C:\Program Files\Control4\Composer131\Drivers\Control**
- Step Six** From the **\Drivers** folder (the parent folder containing the **\Control** folder), open the **\Virtual** folder and copy all three files named “*cardaccess_wirelesspir.c4i*”, “*cardaccess_wirelessrelay.c4i*” and “*contactsingle_motionsensor.c4i*” into it.

The target directory is usually located at **C:\Program Files\Control4\Composer131\Drivers\Virtual**

Step Seven The drivers are now installed. The Media Controller or Home Theater Controller must be **rebooted** by removing and reconnecting power to the controller. Also, if Composer is currently running, it must be **closed** and **restarted**.

Step Eight To add the InHome Wireless Motion Sensor to your Composer Projects, locate the driver inside the Search Tab, under Device Type 'Motion Sensor':



Drag the driver into the project, and configure it based on your requirements.

Copyright, Warranties and Disclaimers

COPYRIGHT ©2007 Card Access, Inc. All rights reserved. Any previously copyrighted contents contained herein remain the property of the respective creators.

No part of this document may be reproduced in any form, including photocopying or transmission electronically to any computer, except as expressly authorized in writing by Card Access, Inc.

This document contains instructions for a pre-release installation of the Card Access InHome™ Wireless Motion Sensor. The information contained in this document represents current information from Card Access, Inc. regarding the InHome Wireless Motion Sensor as of the date of publication. Because Card Access responds to changing market conditions, Card Access cannot guarantee the accuracy of any information presented after the date of this document's publication.

This document is for informational purposes only. CARD ACCESS MAKES NO WARRANTIES, EXPRESS OR IMPLIED, IN THIS DOCUMENT.

Card Access may have patents, patent applications, trademarks, copyrights or other intellectual property rights covering the subject matter in this document. Except as expressly provided in any written license agreement from Card Access, the furnishing of this document does not give you any license to these patents, trademarks, copyrights or other intellectual property.

Card Access, InHome and Wires Not Included are trademarks of Card Access, Inc. ZigBee is a trademark of the ZigBee Alliance. CEDIA is a trademark of the Custom Electronic Design & Installation Association. Control4 is a registered trademark of Control4 Inc. Other marks may be the property of their respective owners.

- end of document -